

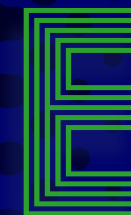
CRE

Creating Careers

ATE

# CONTENTS

Reasons for you to choose Southport College.....	5	Art & Design .....	42-43
We get great feedback .....	6	Graphic Design & Illustration.....	44-45
Student award winners .....	7	Creative Media & Photography.....	46-47
Student Hub.....	8	Electrical Engineering.....	48
Study Hub .....	9	Engineering .....	49
Our facilities .....	10-13	Gas Engineering .....	50
Clinical Skills Hub .....	14-15	Plumbing .....	51
Student support.....	16-17	Design, Surveying & Planning .....	52-53
Enrichment Hub .....	18-19	Construction Multi-Skills .....	54
Fantastic results & exciting destinations .....	20-21	Bricklaying.....	55
Progress Tutors .....	22	Carpentry & Joinery .....	56
English & maths.....	23	Painting & Decorating .....	57
Industry Links .....	24-25	Motor Vehicle Engineering.....	58-59
Apprenticeships.....	26-27	Digital Production, Coding and Web Development .....	60
Find your level.....	28-29	Travel & Tourism .....	61
Free travel passes.....	30-31	Early Years Education & Care .....	62-63
Clouds Restaurant .....	32-33	Foundation Learning.....	64-65
Hospitality .....	34-35	Connect .....	66
Professional Cookery .....	36-37	Aspire .....	67
Beauty .....	38	Ambition .....	68-69
Hairdressing .....	39	How do I apply? .....	70-71
Health & Social Care .....	40-41		



## Enterprise & Early Years

Our Enterprise and Early Years Department includes our Digital Production, Coding and IT courses, Travel and Tourism, Child Care and The Early Years Educator. The department benefits from dedicated industry experienced staff who will support you every step of the way and has fantastic facilities in specially created classrooms and workshops. These including state-of-the-art IT suites, a mock airline cabin and a fully equipped on-site nursery.



## School of Art & Design

There has been a School of Art on this site since 1938 and the building still embraces many of the original beautiful Art Deco features, with bright spacious studios, a grand marble staircase and wonderful exhibition areas. The facilities however are of course bang up to date, and our School of Art students have use of the latest iMacs, printmaking equipment, cameras, greenscreens and much more, as well as talented, inspiring teachers to support you every step of the way.

Whatever course you choose, you will find our School of Art and Design an exciting place to develop your skills and fulfil your passion.



## Centre for Construction

Almost 3 million people are employed in the UK construction industry and our Centre for Construction provides a wide range of courses, giving you the opportunity to create a valuable career across the sector.

You will be taught by industry experienced professionals, who all have experience of the career you are training for and know the skills employers want.

The facilities are excellent, modern workshops, with the latest technology and industry standard equipment and our Pennington Building has been fully refurbished in summer '24. So the skills you learn and the experience you gain will set you in good stead for a successful career.



## Faculty for Health & Wellbeing

Our faculty for Health and Wellbeing comprises a range of different departments and offers fantastic facilities and passionate supportive staff to help you create a career in this diverse and very rewarding sector.

The faculty has amazing facilities, including a professional hair and beauty salon and a fully working professional kitchen with fine dining restaurant; plus brand new state-of-the-art, mock, teaching hospital wards. So whatever course you choose, you will have an excellent experience and leave us fully prepared for a successful career ahead.



# WELCOME



"I do hope that this publication inspires you to join the thousands of other students who choose to take their next step with us each year."

**Michelle Brabner**  
Principal

I am delighted to introduce you to our brand new 2025 prospectus, which I hope will give you an insight into College life with us and help you discover your perfect course. I look forward to welcoming you to Southport College soon.

## Our aim

Our aim is to prepare you for your chosen career, next steps in education and long term aspirations. At our spacious, town centre campus, we offer excellent teaching from industry experienced teachers and individually tailored student support. Our facilities are first-class and our learning environment is safe and secure. Our students are at the heart of everything we do and all the staff are committed to helping every one of you realise your potential and build a fantastic future.

## Your future

Our students move into quality employment or go on to University following completion of their studies at Southport College. To ensure that our students leave us as well-rounded individuals we enhance our courses by providing many additional opportunities including valuable work placements or work experience through our strong industry links; as well as the chance to take part in sports, volunteering, trips and special events.

## Our Guidance

As a 16 year-old the range of options available to you when you leave school can seem overwhelming, so our Student Guidance team is available to contact for careers and course advice, ensuring you make the best choice for your next steps.

- Excellent results and student progression
- Leading provider of Apprenticeships in the local area
- Brilliant work placements and work related projects
- Easily accessible, spacious town centre location

- Lots of opportunities for sports
- Free travel pass (Terms and conditions apply)
- Fantastic facilities with realistic work environments
- Outstanding student support and courses tailored to your needs

- Friendly, industry-experienced teachers
- Free meals for eligible students
- Strong links with local businesses & industry professionals
- Exciting Enrichment Programme



# REASONS TO CHOOSE SOUTHPORT COLLEGE



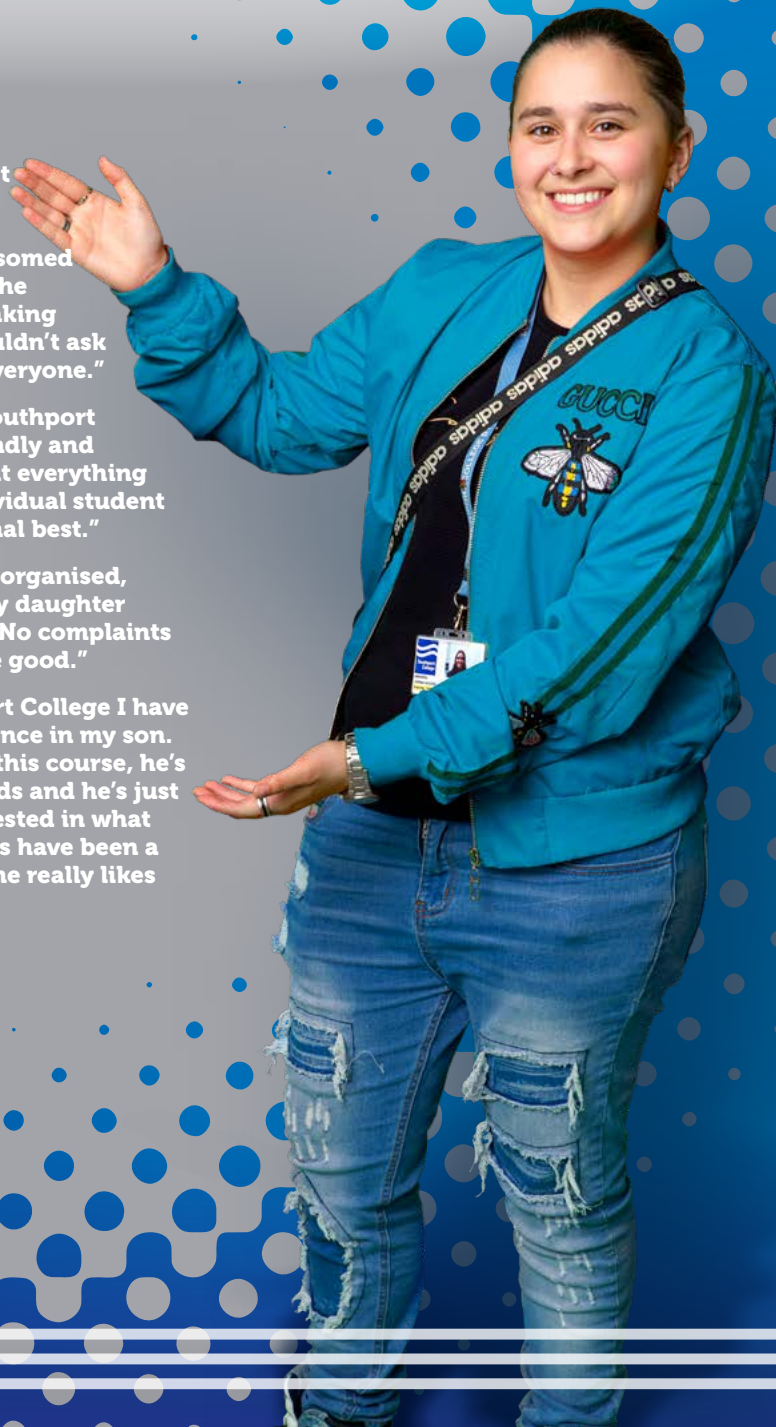
# WE GET GREAT FEEDBACK

"We are delighted with all aspects of Southport College, in particular with the teachers. Our daughter has blossomed in confidence, enjoys the environment and is making super progress. We couldn't ask for more. Thank you everyone."

"I have found staff at Southport College to be very friendly and approachable. They put everything into helping each individual student to achieve their personal best."

"It has been a very well organised, smooth pathway for my daughter through her first year. No complaints from her so all must be good."

"Since joining Southport College I have seen a dramatic difference in my son. He is so engaged with this course, he's made some great friends and he's just really happy and interested in what he's doing. His teachers have been a fantastic support and he really likes and respects them."



## STUDENT AWARD WINNERS





# THE STUDENT HUB

## The heart of the College

Our brand new Student Hub is a fantastic, bright and welcoming space right at the heart of the College. It is the first place you come to when you enter the building in the morning and there are a whole host of teams based there ready to help you, whether you need support and guidance or just have a quick question to ask.

There are plenty of PC work stations if you need to catch up on some work or submit an assignment. Plus there are lots of comfy sofas too, ideal for when you want to take time to relax and unwind or have a quick catch up with a friend!

### Call into the Student Hub for:

- Progress Teachers
- The Study Hub
- Careers Advice
- Travel Passes
- Financial Support
- Counselling
- Student Welfare
- Safeguarding
- General enquiries
- And lots more besides!

## THE STUDY HUB

## A wide range of resources

An integral part of the Student Hub is our fantastic Study Hub, packed with resources to help you with assignments and preparing for exams.

It is run by a team of friendly staff, who are always on hand to help and is a great space to use when you need somewhere quiet to work independently.

### KNOWLEDGE PLUS

Why not try 'Knowledge Plus', where for every hour you learn in class, you can do an hour of independent study?

The Study Hub is the perfect place to find a wealth of material to support this and our friendly team of study skills mentors are there to guide you too.

### STUDY SKILLS MENTORS

If you need help with planning an assignment, research or lots more besides, our study skills team are on hand to guide and support you. Plus they can also offer 1 to 1 support or supervised study to any Level 3 students who would benefit.

## STUDY SKILLS SERVICES

MEET THE TEAM TO HELP YOU WITH:

- REFERENCE
- RESEARCH
- ESSAY & PROJECTS
- ASSIGNMENTS
- TIME MANAGEMENT
- REVISION



## A modern learning environment

At Southport college we have fantastic facilities and are proud that our students always benefit from bright modern learning environments with the latest tools and technology for their field, so that when you go on to further study or into work you are already experienced in using high quality industry standard equipment.

We invest in all our departments, keeping them fully up-to-date. This year, we have expanded our spacious indoor bricklaying workshops, modernised our theory rooms and installed additional carpentry and joinery workshops. Our motor vehicle department is investing into Electric Vehicles and our electrical department in EV charging point training facilities; all of which are designed to simulate real-world challenges faced in industry and give you all the practical experience needed.

Students studying T Level Engineering can also enjoy refurbished workshops and learning spaces, including a computer aided design suite. The workshops recently benefited from a £1.3m investment programme and are well equipped with a fantastic range of tools and equipment, including plasma cutter, guillotine, break press, bench mounted drill, floor mounted pillar drill, pedestal grinder, lathes and much more.

Whatever course you choose at Southport College, you can be sure of friendly, supportive teachers, a great learning environment and the very best equipment for the job, giving you a real head start creating your career!

When you mix all this with our industry experienced staff and outstanding student support, no wonder so many students choose to create their career with us!



### CONSTRUCT



### FABRICATE



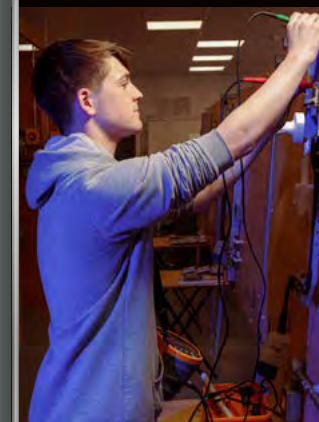
### DIAGNOSE



### REPAIR



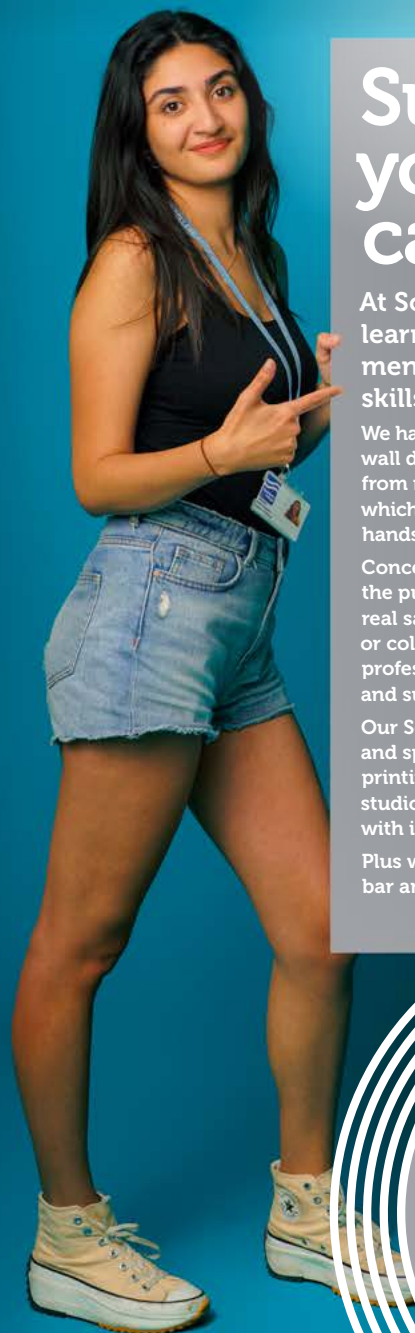
### BUILD



### CONNECT







## Succeed in your dream career

At Southport College you'll benefit from learning in realistic working environments, giving you the confidence and skills to succeed in your dream career.

We have our very own nursery, set up with vibrant wall displays and activity tables, where children from nearby early years settings come and join us, which allows our students to plan activities and get hands on experience.

Concept is our professionally run salon. It's open to the public and allows hair and beauty students to gain real salon experience with everything from cuts or colours to massage therapies and facials, using professional salon products and with close supervision and support from our highly experienced staff.

Our School of Art and Design is home to bespoke, bright and spacious studios. We have a range of traditional printing presses for students to use as well as a textiles studio with sewing machines and a graphics suite with iMacs.

Plus we have Clouds, our own professional kitchen, bar and fine dining restaurant (see page 28).

### BRAND NEW IN 2025 Clinical Skills Hub

A fantastic new learning environment for our T Level Health. Two mock teaching wards, with professional hospital beds, working areas and high-tech mannequins to simulate a real hospital.



### TEACH



### STYLE



### TRANSFORM



### CREATE



### HOST



### IMAGINE





# CLINICAL SKILLS HUB

## Brand new Hospital Teaching Wards

As part of a recent £2.3m investment, our T Level Health and Social Care students can now benefit from an unrivalled learning environment with our fantastic, brand new Clinical Skills Hub.

Comprising two spacious mock hospital wards, each with four beds and a wide range of industry standard hospital equipment, the simulated teaching wards allow our students to learn and practice essential care skills in a realistic setting within the familiarity of college.

The wards also make use of a large selection of high-tech and very life like mannequins, that allow students to gain hands on experience treating "patients" with a whole host of medical needs.

As part of a recent £2.3m investment, students now benefit from an unrivalled, fantastic brand new learning environment!



Being able to learn in the wards is fantastic and great preparation for my hospital placement. It's just like a real hospital wing and the classrooms are a really nice environment to study in.

## State-of-the-art facilities for students

This state of the art facility also has its own dedicated classrooms attached to the wards. These bright, modern and spacious rooms are fully soundproofed, fitted with large interactive screens and ensure that students can combine the valuable hands on practical skills with high quality theory in a seamless transition.

- Two Simulation Hospital Wards
- 8 Patient Bed Stations
- High-tech Training Mannequins
- Soundproof Classrooms
- Large Interactive Screens





## Safeguarding & Welfare Support

We recognise that our duty of care to students and their wellbeing is paramount at all times. Safeguarding Officers offer support to all learners who may be facing adversity, including those who are Care Experienced, Young Carers, Teenage Parents or who are under the supervision of the Youth Offending Team.

We also work with learners who are in financial crisis and are able to offer financial support via charitable bursaries (subject to eligibility), housing support and access to local foodbanks.

### Feel safe

Southport College is committed to creating an environment that is safe and welcoming to all students. As a College, our community includes young people aged 16 to 18 and vulnerable adults.

We ask that you wear your student ID badge at all times and our security staff monitor this throughout the day. For this reason and as part of our commitment to safeguard our students and provide a secure place to learn; we ask all potential students to declare if they have a criminal conviction, any pending court cases or if they have been charged with any criminal offence either at application stage or during their course.

You will be asked to complete a declaration at the point of enrolment. If you do have convictions, you won't be automatically excluded from enrolling on a College course; each case will be considered individually.

# STUDENT SUPPORT



### WE CAN ALSO HELP YOU WITH:

- Information, advice and guidance about courses
- Impartial careers guidance and support
- Financial assistance such as travel passes, help with kits, uniforms and childcare
- Counselling support

## Financial Support

### 16-19 bursaries

This is a fund intended to assist those students who face the greatest barriers to being in education, e.g. care leavers, young people in care and young people in receipt of Income Support. Students who do not qualify for the full £1,200 may still qualify for help from the Bursary Fund with course-related costs, e.g. kit, equipment, uniforms, books. Please ask at your course discussion.

### Discretionary bursaries

Students who do not meet the criteria for the above, but are facing financial hardship, can apply for help towards uniforms, certain trips, UCAS fees, DBS and other course related costs. Students must have a household income of less than £38,500 as assessed by HMRC, or the family must be in receipt of a means-tested benefit.

### Travel passes

The College offers students\* who live over 1 mile away from College and study a full-time Further Education course the opportunity to apply for a free travel pass or funds. See page 30.

\*Students aged 16-18 who live more than 3 miles away from the College on a full time course will be eligible for travel passes (or funds where necessary). Students who live 1 to 2.9 miles away from the College and are 16-18 are means tested before passes are issued.

### Care to Learn (Childcare support)

Care to Learn provides financial support for young parents. The scheme can pay up to £180 a week towards childcare. You must be aged under 20 at the start of your course.

## Learning Support

### Support for identified students

Identified students who disclose a support need are individually interviewed to assess their needs and the level/type of support or tutoring required. We also regularly review all students receiving support to ensure the most appropriate support is in place. We are proud to have an outstanding student support structure that is tailored to your individual needs.

### In addition the College has:

- A Health and Wellbeing Coordinator who coordinates a service for students identified with a medical need, attends first aid calls and can signpost students to relevant outside agencies.
- Learning support in and out of class
- Learning Support Suite (to aid the transition to College)
- Personal care assistants
- Safe 'time-out' space
- Social/emotional/behavioural support
- Supervision at lunch and break time if needed
- Support and/or screening by our Specialist Tutoring Team for students with specific learning difficulties (SpLDs) in order to apply for access arrangements e.g. extra time, reader, scribe etc.
- Support with communication skills
- Transition visits

For further information please contact the Learning Support Team on 01704 392862 or via email on [learningsupport@southport.ac.uk](mailto:learningsupport@southport.ac.uk)



# ENRICHMENT HUB

## So many activities for you

**Southport College life is not just about your course, our Enrichment Team always have an exciting programme of activities for you to enjoy too!**

It's a great way to learn new skills and make new friends and there is lots to choose from, including:

- 5 a side football
- Glow in the Dark Badminton
- Driving Test Theory
- Basketball
- Student Council
- Pool
- Musical Bingo
- Film Club
- Free Gym Membership
- Art Club
- LGBTQIA+
- Table Tennis
- Work Readiness Programme
- Quizzes
- Charity Events
- And more!

### OPPORTUNITIES FOR YOU

The Enrichment programme is about providing opportunities to make new friends, to bring learning to life and broaden your range of interests.



Find out about all the great activities available for you.



## A space to relax and have fun!

Our brand new enrichment hub is the perfect place to chill out. There's a free pool table, gaming, table tennis, art materials, cosy sofas and games available for all. Plus you'll find a fully equipped gym that's free for all students.

It's also the home of Spark Radio, our very own student radio station, where you can try your hand at broadcasting, programming or creating podcasts. Why not meet the enrichment team during our welcome week and see what you can get involved with!





Many of our students choose to continue their studies at University and regularly achieve their first choice.



# FANTASTIC RESULTS & EXCITING DESTINATIONS

Level 3 Extended Diplomas are the equivalent of three A-Levels and worth up to 168 UCAS points, which can be used to get on to your chosen degree course and lead to your dream career.

## University Careers

Universities will set the minimum number of points required for entry on to each course they offer and it means you can work out if you have the right qualifications and grades to apply.

Make sure you check the University website for specific entry requirements if you have a particular course in mind.

Our students are now studying at Universities across the country, many of which are those in the Russell Group, including:

- Bangor University
- Edge Hill University
- Exeter University
- Goldsmiths University
- Kings College London
- Leeds College of Art
- Liverpool John Moores University
- SAE Institute Liverpool
- University of Liverpool
- Manchester Metropolitan University
- University of Manchester
- University of Central Lancashire
- University of York

At college, you will have access to a Careers Advisor, here to help you with career choices and creating job applications that really stand out. Whether you choose to begin your career locally or to move further afield, you will have all the tools to help you secure your dream role.

Recent students have joined the armed forces or set up their own successful businesses. Others now work in high level employment for companies including:

- BAE Systems
- Cooperheat
- Fletchers Solicitors
- Formby Hall
- Kids Planet Nurseries
- Lattimer's Engineering
- Liverpool Women's Hospital
- Merseyside Police
- Mikhail Leisure Group
- Studio 397
- Southport and Ormskirk Hospital
- The Royal Navy
- The Vincent Hotel
- Toni and Guy



# PROGRESS TUTOR

## Progress Sessions

You will have timetabled sessions with your Progress Tutor where as a group, you'll be discussing a whole host of fascinating topics to help develop your knowledge about society, health, wellbeing and careers, all building your skills for life.

You'll learn all sorts of new things about equality and diversity, budgeting and finance and much more, all designed to help you as an adult.

A big part of what the Progress Team do is preparing you for your future career. We can work with you to build a fantastic CV or UCAS application that will help you into the career, Apprenticeship or University you are dreaming of.

## One-to-one help

You will have one-to-one sessions with your Progress Tutor too, which are excellent opportunities to receive individually tailored support during your time at college.

## We will discuss:

- Progress in your subjects
- What support you need in college and how we can help. We can also signpost you to other college services such as careers, welfare and safeguarding
- What your career goals are and how we can support you to work towards these
- Your applications to university, apprenticeships and employment and how to make them stand out

## What we do

- Help you to prepare for your future career
- Offer advice on progression options
- Support you in completing your qualification
- Monitor your progress and attendance in college
- Link you with other support services in the college



All Southport College students have a dedicated Progress Tutor who is here to offer you support and help you to make progress on your course, as well as towards your individual goals.

# ENGLISH & MATHS

More and more businesses are insisting their employees have GCSEs in both English and maths at grade four or above and it is an essential part of university entry criteria too.

If you don't already have a grade four in English and maths when you arrive at Southport College, we will create a personalised study programme for you that will fit alongside the course you have chosen and will help you to achieve these vital qualifications. All you need to achieve and succeed is commitment and engagement.

## Make English work for you

English at the College is very enjoyable and achieving a qualification in it gives you the best opportunity for a fantastic career.

Our caring and professional teachers are experts at supporting students to get the results they need.

Alongside our interactive, student focused lessons we offer additional support sessions and a range of additional enrichment opportunities such as Creative Writing competitions, a reading group and an Amnesty International group for students who want to make a difference.

## What you will study

Your personalised study programme may include:

### GCSE English Language

This is requested by most employers and needed if you wish to progress to university. Our course will help you gain lots of transferable skills that will prove invaluable in the future.

In addition, you are offered the opportunity to practise your presentation and listening skills in the Spoken Language endorsement. As effective communication is so important in a range of careers, this is a useful skill to develop.

### Functional Skills English

#### Entry Level or Level 1

This is a stepping stone to Level 2 Functional Skills or GCSE and provides the building blocks of English such as sentence structure, punctuation, grammar and comprehension.

#### Level 2

An alternative to GCSE if future plans do not require this qualification.

It refreshes topics such as sentence structure, punctuation and grammar but also provides knowledge of how to analyse and interpret meaning in text.

You learn skills such as letter, report and article writing, essential for the workplace.

## Make maths work for you

Maths lessons at Southport College are highly interesting and engaging as teachers use a variety of resources including many new interactive platforms to teach with.

Our dedicated maths teachers are experts both in the subject and at supporting students, delivering exciting lessons as well as additional support sessions where appropriate. They are here to fully prepare you for any exams and teach techniques in the classroom that reflect the exam papers.

## What you will study

Your personalised study programme may include:

### GCSE Maths

This is requested by most employers and required for entry into university. GCSE Maths is a fantastic qualification to help get you onto the career path you want.

We teach the latest syllabus which focuses more on mathematical thinking and problem solving. Some questions in exams are contextually set in the real world so we have an emphasis on using real life problems in the classroom and applying maths techniques to solve them.

### Functional Skills Maths

#### Entry Level or Level 1

If you are not yet at the level to study GCSE maths, we can offer an Entry Level or Level 1 Functional Skills course to prepare you for taking maths GCSE, at a later stage.





# INDUSTRY LINKS

## Working relationships

We have close links with many employers in the region, both large and small. This is not only to ensure we are providing our students with the knowledge, attitude and transferable skills employers are looking for when developing their workforce, but through these links we can offer students Apprenticeships, guest speakers, live briefs, valuable work placements and much more.

"At Techedia, we are delighted to have a strong partnership with Southport College, allowing students to experience work placements and undertake Apprenticeships with us. These partnerships underpin our dedication towards organic growth and support the youth of Southport with their future. As Head of Learning and Development, I oversee a team of up and coming software developers as well as supporting others in shaping their professional goals.

Not only are work placements becoming an essential element in qualifications, they also give invaluable industry experience to students looking to get into the digital sector. We know it could be their first taste of actually working in their chosen career, so have designed a fantastic, fully equipped training suite. Here, they work on live projects, in a real working environment, whilst supported by experienced

facilitators. Learners also benefit from the interaction with existing staff to gain key insight to what it's really like working in the sector.

Students learn so much at college and the facilities there are fantastic, but you can't fully simulate the unexpected challenges and pressures that come with working in businesses like ours. It's a great way to broaden skills for the workplace whilst gaining actual work experience which can be used in future job applications. Should an applicant's CV include a work placement like this, accompanied with good qualifications, they quickly become an attractive prospect to any employer.

We're truly looking forward to welcoming and inspiring more Southport students on their journeys toward dream careers."

Joshua Leigh,  
Head of Learning & Development.



Most of our courses include a valuable work placement, which is designed to give you hands on experience of the industry and confidence in the workplace.

## Businesses we have worked with

- Army
- Bijou Cinema Southport
- Blackpool Pleasure Beach
- CAE Technology Systems
- Clynol
- Cooperheat
- Decleor
- Dovehaven Care Homes
- Dulux Paints
- Edge Hill University
- Farmageddon
- Fletchers Solicitors
- Formby Hall Golf Resort & Spa
- Graham & Brown
- Hamilton Acorn
- Hogg Robinson UK
- Ilford & Harman Technology
- J.A.R.E Airline Training Partnership
- Jason James Salon
- Lattimers
- Liverpool Women's NHS Foundation
- L'Oreal
- Mac
- MD Travel
- Mikhail Hotel and Leisure Group
- RAF
- Royal Academy Arts
- Samaritans UK
- Sound City Liverpool
- Southport Flower Show
- Southport & Ormskirk Hospital NHS Trust
- Techedia
- The Atkinson
- The Vincent
- UCLan
- University of Cumbria



# APPRENTICESHIPS

## What is an Apprenticeship?

An Apprenticeship is a job with training and an alternative route into skilled employment. They are designed in partnership with employers to ensure employees gain the skill they need to do their job well.

### How does an Apprenticeship work?

Apprenticeships are offered in over 1500 occupations and available to people over the age of 16.

Apprentices work alongside experienced staff to gain knowledge, experience and ultimately a qualification in the area they wish to pursue a career in. Apprentices can be paid the National Minimum Apprenticeship Wage or the National Minimum Wage according to age but some apprentices earn significantly more.

As part of the structured programme, Apprentices work towards qualifications by studying technical skills and carrying out practical assessments. Depending on your employer and their type of business you may receive training on a day-release basis, where you would attend college one day a week. However for some Apprenticeships, all training is delivered in the work place



## Can I do an Apprenticeship?

Apprenticeships can be challenging as you will be working for an employer and training for your job role at the same time.

Our checklist below will tell you if an Apprenticeship could be the route for you:

- You must be over the age of 16
- You must find a job in your chosen sector and have an interest in progressing in that job role
- Your employer must be willing to offer you an Apprenticeship
- You will need a good work ethic, excellent timekeeping and a professional approach

FOR MORE  
INFORMATION  
VISIT  
[southport.ac.uk/apprenticeships](http://southport.ac.uk/apprenticeships)

## Look for vacancies

Register with the National Apprenticeships Services [www.gov.uk/apply-apprenticeship](http://www.gov.uk/apply-apprenticeship) and view their current vacancies. If you are interested in any of the advertised vacancies you can apply through their website.

You can also view the Apprenticeship vacancies on the Southport College website. These are the vacancies where Southport College will deliver the training for those employers.

## Approach employers

You can find your own Apprenticeship by approaching businesses with your CV and a Covering Letter.

Remember to choose businesses that you are interested in working for.

## Join our talent pool

Once you've finished your GCSEs you can join the talent pool at Southport College. We may be able to match you with an Apprenticeship and an employer that suits you.

To join our talent pool send your CV and covering letter to: [employer.partnerships@southport.ac.uk](mailto:employer.partnerships@southport.ac.uk)

How do I get an Apprenticeship?



# FIND YOUR LEVEL

## Connect (Entry Level)

**Our Connect course is for learners who are working towards Entry Level 2.**

The course is tailored to a student's individual needs and focuses on the transition to College from school as well as preparation for their next step.

It consists of two 1 year courses dependent on the ability/achievements of students. The course is designed to give students the confidence and skills to progress on to one of our vocational courses, work experience through a supported internship or move towards independent living.

Our courses are developed with employers to get you where you want to be. Whatever qualifications you leave school with, we have a course for you. It's all about finding the right level!

## Aspire (Entry Level 3)

**This is a one-year course designed to help students to prepare for their next step on the career ladder.**

Students learn employability and independent living skills and take tasters in a number of different subjects to help them to choose what they would like to progress to next.

## Ambition (Level 1 Pathways)

**Our Level 1 pathways allow learners to explore and gain skills in four exciting vocational areas whilst at the same time developing maths, English and employability skills.**

The course takes a year to complete and there are 4 pathways to choose from. They are a great introduction to the subjects and are designed to help you gain the skills to progress to Level 2.

## Level 1

**Available in a wide range of subjects.**

These one year courses are an introduction to your chosen subject. When you have finished the course you will be ready for Level 2, full-time work or an Apprenticeship.

For entry requirements, please see the individual course listings.

## Level 2

**One-year courses available in a wide range of subjects.**

You will study your chosen subject in detail as well as put the theory into practice.

After you have completed the course you will have the option of progressing to Level 3, looking for full-time work or perhaps starting an Apprenticeship.

Entry requirements for this level vary from course to course; please see the individual course listings.

## Level 3

**These vocational qualifications take one or two years to complete depending on your chosen subject.**

Certain Level 3 courses will give you enough UCAS points to progress onto university. Others pave the way for progression onto an Advanced or Higher Apprenticeships.

To study a skills-based course at Level 3 you will need a Level 2 qualification in a vocationally related area.

## T Levels

**T Levels are exciting new Level 3 qualifications that are available in various subject areas.**

They are equivalent to three A-Levels and focus on technical skills that can help students into skilled employment, university or apprenticeships.

They all include a substantial and highly valuable industry placement.

We are proud to have been selected to offer T Levels in eight areas for 2025.

## Level 3 Extended Diplomas

**Along with T Levels these are the vocational equivalent of A-Levels.**

They take two years to complete, give you the UCAS points to apply to University and can be worth the equivalent of three A\*grades at A-Level.

They also give you the experience that businesses want so you can apply for a job or an Apprenticeship.





# FREE TRAVEL PASSES

Southport College is in the heart of the town centre and is very easily accessible, by bus, train, bike or on foot.

## Free Travel Passes

All Southport College students who are aged 16-18 and live more than 3 miles away from College, are eligible for a free travel pass, you just need to apply.

Our free travel passes are valid 7 days a week, so not only will you be able to use it to get to and from college whenever you need to, you can also use it in the evenings and at week-ends to visit friends or go to work too. How good is that!

Students who live 1-2.9 miles away may still be eligible, depending on their circumstances, so please do contact us for more information.

Please note that the college may also allocate a trio pass where daily use of multiple transport providers is unavoidable.

## By car

Southport is accessed via the A565 from both the north (Preston) and the south (Liverpool) and by the A570 (Ormskirk and the M58).

The College is situated off Lord Street, on Mornington Road. Visitors attending our open evenings are able to access free on-site parking.

For Satnav: enter our postcode PR9 0TT.

## By train

A five-minute walk from the College, Southport station is accessible from all stations towards Liverpool and Hunts Cross through Merseyrail's Northern Line service. There are also Northern Rail trains linking the College to Burscough, Appley Bridge, Wigan and other stations towards Manchester.

## By bus

Buses from across the region stop regularly on Lord Street, a five-minute walk from the College.

Tarleton/Hesketh Bank: 2X, 2

Ormskirk and Skelmersdale: 375, 385

Maghull: 300

Crosby: X2

Bootle: 300, X2

## By bike

If you wish to cycle to College there are secure bike storage facilities on-site.

## Further Information

Check out the public transport options from your area. [www.traveline.org.uk](http://www.traveline.org.uk) is a good place to start. Make sure you find out if your chosen public transport operator offers a student ticket or a regular user discount.

- [www.arrivabus.co.uk](http://www.arrivabus.co.uk)
- [www.merseyrail.org](http://www.merseyrail.org)
- [www.stagecoachbus.com](http://www.stagecoachbus.com)
- [www.merseytravel.gov.uk](http://www.merseytravel.gov.uk)





# UP IN THE CLOUDS

Southport's best kept secret...



Clouds is our fully working restaurant that gives Hospitality & Catering students the necessary work experience to be successful within the hospitality and catering industry.

The students will gain experience in how to run a restaurant and bar as well as learn crucial event management skills.



Clouds is open to the public for a fine dining lunch experience and a host of special events. New customers are always welcome! For opening times or to make a reservation call 01704 392676.

## Clouds Theme Nights

Throughout the year, our hospitality and professional cookery students host various special themed events. Burns Night is just one! This wonderful event, which includes a traditional piping in of the haggis, is always a sell out with our customers and a firm favourite with our students too!





Level 1 Hospitality - Introduction to the industry		One year
Minimum entry requirements Three GCSEs at grade 2.		
Alternatively	Pass grade in Aspire, our Entry Level 3 qualification (see page 67).	

This course will help you to gain the practical skills that you need to work in the Hospitality Industry. Learn in a professional kitchen and restaurant. Cover a range of exciting topics including basic food preparation & cooking, preparing & serving drinks, customer service and health and safety. A wide variety of teaching methods are used and you will cover English, maths and personal skills too. After successfully completing this qualification you could progress to a Level 2 in Professional Food & Beverage Service or Level 1 Professional Cookery, or perhaps start an Apprenticeship in the industry.

## Creating Careers in Hospitality

Find out about opportunities and salaries available to you.



Level 2 Hospitality - Food & Beverage Service		One year
Minimum entry requirements Four GCSEs at grade 3.		
Alternatively	Pass grade in a related Level 1 qualification.	

This course is ideal if you want a career in the hospitality industry and covers a wide range of interesting topics, including food & bar service, beverage product knowledge, menu creation, handling payments & bookings, customer service, health & safety and workplace skills. You will be based in our fantastic Clouds Restaurant, working with real paying customers and will develop the skills to always deliver a great dining experience.

Your programme will also include maths, English, practical and team skills. Successful completion will allow you to progress on to Level 3 Diploma in Food and Beverage Supervision or alternatively you could use your qualification to start work within the industry.

Level 3 Hospitality – Supervision & Principles		One year
Minimum entry requirements Pass grade in Level 2 Hospitality.		

On this course, you will develop your front of house and leadership skills to enable you to work at a supervisor level in the Hospitality Industry. This is a progression route from Level 2 and is based in our fantastic Clouds Restaurant, working with real customers. You will gain the skills to oversee running a restaurant, as well as paring wines, creating cocktails, carving and cooking at the table.

You will study a wide variety of modules including planning & supervising service operations, being a Licensee, preparing and serving drinks and supervising hospitality events. After successfully completing the course, you will have the skills needed for a range of career opportunities including Restaurant Supervisor, Bar Manager, Sommelier, Event Manager or Trainee Banqueting Manager.



I also work in a restaurant outside college. As I progress through the levels, I'm closer to my dream career of running my own restaurant.



# PROFESSIONAL COOKERY

Level 1 Professional Cookery	One year
Minimum entry requirements Three GCSEs at grade 2.	
Alternatively	Pass grade in Aspire, our Entry Level 3 qualification (see page 67).

This Course is aimed at those who want to pursue a career in professional cookery or the hospitality industry and will develop your general culinary skills as well as covering areas such as food safety, menu development, healthy eating; baking and patisserie. You will be based in Clouds, our fantastic professional kitchen and restaurant, and will gain a broad understanding of the industry and well as getting lots of hands-on practical experience and enjoying demonstrations from visiting professional chefs. Maths, English and ICT will also form part of your programme. Successfully completing the course will enable you to progress to Level 2 Professional Cookery.

Level 2 Professional Cookery	One year
Minimum entry requirements Four GCSEs at grade 3.	
Alternatively	Pass grade in a related Level 1 qualification.

This exciting course covers both the practical and theory sides of professional cookery and will give you the skills you need to progress in the fast moving industry. You will be based in our professional kitchen and restaurant, Clouds, using industry standard equipment and preparing food for real paying customers. The course covers a range of topics, including how to prepare meat, poultry, vegetables and pulses and how to cook sauces, soups and stocks, as well as food safety, special diets, kitchen operations and menu planning. On successful completion of this course you could move directly into employment, or you may choose to progress to Level 3 and develop more specialist skills.

Level 3 Hospitality – Supervision & Principles	One year
Minimum entry requirements Pass grade in Level 2 Professional Cookery.	

This Level 3 Diploma in Professional Cookery will give you the skills you need for complex or advanced food preparation and cooking. It covers a variety of high level modules including preparing, cooking and finishing complex meat, fish, poultry and vegetable dishes, hot and cold sauces and dressings. You will also develop the skills to run a kitchen and a section; guide, monitor and delegate to the Level 1 and 2 students and create and plan complex and high level menus. After successful completion of the course you will be well prepared to start work in the industry or you may wish to progress into higher education.

## Creating Careers in Professional Cookery

Find out about  
opportunities and  
salaries available  
to you.



The kitchens are  
amazing and teachers  
hold really high  
standards. Clouds  
Restaurant gets busy  
but it's so rewarding  
when customers are  
enjoying our food.





# BEAUTY

## Creating Careers in Hair and Beauty

Find out about  
opportunities and salaries  
available to you.



Level 2 Beauty Therapy	One year
Minimum entry requirements Four GCSEs at grade 3 including English and maths	
Alternatively	Pass grade in Ambition Hair & Beauty (see page 68) and GCSE grade 3 in English and maths.

This course is the ideal preparation for a career as a beauty/spa therapist and will give you a substantial recognised vocational qualification. You will develop knowledge and understanding of anatomy and physiology, health and safety and client care and communication as well as learn all about the beauty therapy products and equipment you will use daily.

You will develop competent skills in a host of beauty treatments, including facial skin care, eyebrows and lash tinting, waxing, manicures, pedicures and make up application as well as learning about salon reception duties and customer service.

On successful completion you can progress to a Level 3 Beauty Diploma or start work as a junior therapist in a variety of different settings.

Level 3 Beauty Therapy	One year
Minimum entry requirements Pass grade in Level 2 Beauty Therapy and GCSE English or maths at grade 4 and English or maths at grade 3	

This Level 3 Diploma will prepare you for employment as an advanced beauty therapist, with the knowledge, understanding and skills to work competently. You will become proficient in body massage using pre-blended aromatherapy oils, stone therapy massage, facial and body electrotherapy treatments. You will also learn about safety control and how to plan promotional activities. Successful completion could see you working as a beauty therapist in a salon, spa, cruise ship or even running your own business and it also opens up opportunities for lots of Level 4 qualifications too, including skin rejuvenation, physiology for advanced beauty therapy or Laser and Intense Pulsed Light.

Hair and Beauty Work Placements	
Level 2 Beauty -	One day per week from January
Level 2 Hair -	One day per week from October
Level 3 Hair & Beauty -	Two days per week from September

# HAIRDRESSING



We also offer  
Level 1 Hair &  
Beauty  
See our Ambition  
programme on  
page 68

Working with real  
clients means no  
two days are the  
same. We get a wide  
range of experiences  
and learn many new  
techniques.

Level 2 Hairdressing	One year
Minimum entry requirements Three GCSEs at grade 3 including GCSE English and maths	
Alternatively	Pass grade in Ambition Hair & Beauty (see page 68) and GCSE grade 3 in English and maths.

This VTCT Level 2 Diploma in Women's Hairdressing has been specifically designed to develop your practical skills in the art of cutting or dressing women's hair, providing effective shampooing and conditioning services, skills in colouring and lightening hair and providing a good consultation for your clients.

Underpinning this qualification you will develop a sound knowledge and understanding of each unit including health and safety and working in the hairdressing industry. You will develop your practical skills to a high level of occupational ability so you can perform your own salon services. On successful completion, you will have the opportunity to progress to the following VTCT qualifications; Level 2 Diploma in Barbering, Level 3 Diploma in Women's Hairdressing or Level 3 Advanced Hairdressing Apprenticeship.

Level 3 Hairdressing	One year
Minimum entry requirements Pass in Level 2 Hairdressing and GCSE English or maths at grade 4 and English or maths at grade 3.	

Upon completion of Level 2, you can progress to the VTCT Level 3 Diploma in Women's Hairdressing. This qualification has been specifically designed to develop your practical skills to an advanced level through a variety of techniques. Units include the creative art of cutting hair, the artistic skill of colouring, imaginative dexterity of styling and dressing hair, and how to provide effective consultation support for colleagues.

On completion you could progress on to a range of specialist VCT related qualifications, including Level 2 Diploma in Barbering, Level 2 Award in Preventing Contact Dermatitis or a Level 3 Award in Bridal Hairstyling. However this qualification could also lead directly into employment in the hairdressing industry as a senior hairdresser, a salon manager or to work as an independent hairdresser, perhaps on cruise ships, freelance or with your own salon.



# HEALTH & SOCIAL CARE



Level 2 Health & Social Care	One year
Minimum entry requirements Four GCSEs at grade 3 including English, maths and science. Plus a satisfactory DBS.	
Alternatively	Pass grade in Ambition Caring Professions (see page 68) and GCSE grade 3 in English and maths, plus a satisfactory DBS.

This course is designed to provide you with experience and an insight into the health and social care sector. If you want to study T Level Health or Level 3 Extended Diploma, this is the perfect stepping-stone for you allowing you to gain the entry requirements.

You will cover a range of topics including communication and ensuring safe environments in health and social care. The impact of diet on health, care values and improving health and wellbeing. You'll also gain vocational experience by taking part in a valuable placement in a relevant health and social care setting.

**Creating Careers in Health and Social Care**  
Find out about opportunities and salaries available to you.



Level 3 Health & Social Care	Two years
Minimum entry requirements Five GCSEs at grade 4 including English or maths and English or maths at grade 3.	
Alternatively	Pass grade in a related Level 2 qualification and GCSE English or maths at grade 4 and English or maths at grade 3, Plus a satisfactory DBS.

The Level 3 Extended Diploma offers learners a modern, work-related qualification which opens the door to higher education and a career in the health and social care sector. The course is mainly assessed on coursework and students get hands on with practical sessions in our brand-new Clinical Skills Hub (see page 14), on work placements in a relevant care setting, plus theory taught by industry expert teachers.

You will learn about a range of subject areas including Human Lifespan Development, Safe Practices, Individual needs, Sociology, Anatomy and Physiology, Mental Health and Psychology.

T Level Healthcare	Two years
Minimum entry requirements Five GCSEs at grade 4 including English, maths and science, plus a satisfactory DBS.	
Alternatively	Pass grade in a related Level 2 qualification and GCSE English or maths at grade 4 (or equivalent) and a satisfactory DBS.

T Level Healthcare is a fantastic preparation for the NHS, medical and social work environments. It includes a minimum of 315 hours of valuable work placement, in varied settings, where you aspire to work. Using excellent links with Southport & Ormskirk Hospitals and other local healthcare providers, we can help find you a suitable placement.

In college, you'll be based in our Clinical Skills Hub; brand-new, state-of-the-art simulation hospital wards, part of a £2.3m funding from the Department for Education's T-Level Capital Project.

Industry expert teachers deliver a diverse range of engaging course content. In the second year of the course, you will study an occupational specialism called 'Supporting the Adult Nursing Team', which supports a diverse range of career options. We also invite guest speakers throughout the course, including ex-students, giving learners additional insights into many aspects of the healthcare sector.



On my placement I worked in A&E, Acute Medical, Stroke, Spinal and Cardiology units. I can't wait to start Adult Nursing, with an Integrated Masters, at Edge Hill University.



Level 2 Art & Design	One year
Minimum entry requirements Four GCSE's at grade 3 including English and maths.	
Alternatively	Pass grade in Ambition Creative Industries (see page 68) and GCSE Grade 3 in maths and English.

An absolutely fantastic introduction to a range of specialist areas in the field of visual arts and design. Your studies include an exciting range of techniques such as painting & drawing, photography, textiles, 3D design & crafts, fine art, printmaking, fashion and art history. Through practical, theory and research sessions, our teachers help students develop their skills and knowledge and upon completion, will have been provided with a good basis ready for study at Level 3.

## Creating Careers in Art and Design

Find out about opportunities and salaries available to you.



Level 3 Art & Design	Two years
Minimum entry requirements Five GCSE's at grade 4 including English or maths and English or maths at grade 3. Plus a good portfolio.	
Alternatively	Level 2 qualification in related subject and GCSE English or maths at grade 4 and GCSE English or maths at grade 3 (or equivalent).

Become a well-rounded creative art student, exploring and developing a broad range of art and design specialisms, taught by teachers who also work in the industry as practising artists and designers. You will form your own specialist practice through experimentation and exploration, creating a strong portfolio of work that is displayed in an end of year public exhibition.

There is access to studio spaces, printmaking and textiles workshops, photography studios and state-of-the-art equipment. You are encouraged to engage with competitions, live briefs, community work, employer engagement and attend inspirational trips to places such as Liverpool, London and Berlin. Throughout the course, you'll be guided through your progression options with talks, university visits, meeting ex-students and support with UCAS applications from our experienced, supportive team.

Level 4 Foundation Art & Design	One year
Minimum entry requirements Level 3 qualification in related subject and GCSE English and maths at grade 4.	

For students considering going onto an art-based degree, many universities prefer that they first complete a Foundation Diploma in Art and Design. This year long course bridges the gap from general college study to full-time art course at university. Whilst further continuing to explore and experiment with materials, techniques and processes, you will develop into an independent artist, transitioning from being assigned and directed to your projects to a position of a refined area of specialism.



GALLERY

We also offer  
**Level 1 Creative Industries**  
See our Ambition programme on page 68

I had the freedom to follow my own path when learning new techniques. The staff are all really great and gave me lots of confidence to convey my thoughts into strong outcomes.





School of  
Art & Design

### Level 3 Graphic Design

Two years

#### Minimum Entry Requirements

Five GCSE's at grade 4 including English or maths and English or maths at grade 3. Plus a good portfolio.

#### Alternatively

Level 2 qualification in related subject and GCSE English or maths at grade 4 and GCSE English or maths at grade 3 (or equivalent)

In our Graphic Design studios, learn how to think logically and creatively to solve visual communication problems. Students have access to two Mac suites, photography studio and film and TV studio. As well as computer-based design, students learn traditional materials, techniques and processes. Taught by professional designers, you will learn about branding, marketing, illustration, photography, layout, image manipulation, printmaking, typography, animation and more.

Previous students have undertaken short work placements in graphic design studios, advertising agencies, printers and architects. Local businesses offer design briefs, known as 'live projects' allowing students to create logos, branding and artwork for signage, posters and stickers, used in the real world, a fantastic addition to their portfolios.



GALLERY

## Creating Careers in Art and Design

Find out about  
opportunities and  
salaries available  
to you.



# GRAPHIC DESIGN & ILLUSTRATION

The College has lots of great facilities; not just the iMacs but traditional print presses, silk-screening equipment and photography studios too.







School of  
Art & Design

## Creating Careers in Creative Media and Photography

Find out about opportunities and salaries available to you.



We also offer  
Level 1 Creative  
Industries  
See our Ambition  
programme on  
page 68

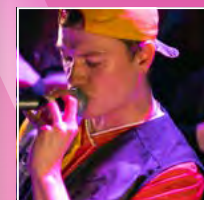
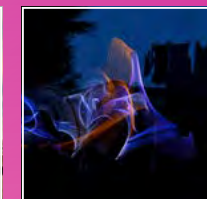
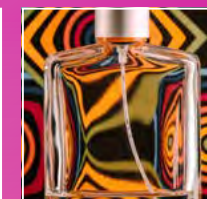
The teachers are always so supportive and the course has been fantastic. I'm now looking forward to studying Content Creation & Online Marketing at uni!

# CREATIVE MEDIA & PHOTOGRAPHY

Our students have access to an amazing media centre, fully kitted out with iMac suite, film and TV studio, photography studio, dark room and all the equipment needed to succeed.

There's modern DSLR and traditional film cameras, green screens, sound and video equipment, gimbals, stabilisers, lighting, tripods and so much more for you to use, enabling you to produce amazing static and moving imagery.

Our technicians are on standby to assist you with all your film and photography needs.



Level 2 Creative Media	One year
Minimum entry requirements Four GCSEs at grade 3 including GCSE English and maths.	
Alternatively	Pass grade in Ambition Creative Industries (see page 68) and GCSE Grade 3 in maths and English.

This exciting new course will enable you to start building the technical skills and knowledge relevant to industries in the media sector such as film, TV, animation, games design, graphic design, audio/music technology and media. Your teachers will introduce you to our media suite and equipment which includes iMacs, cameras, lighting equipment, photography studio, dark room and film and TV studio. They will help you to develop the research skills which underpin all media productions as well as gaining a basic understanding of employment opportunities, job requirements and working practices in the media sector.

Level 3 Creative Media Production Technology and Photography	Two years
Minimum entry requirements Five GCSE's at grade 4 including English or maths and English or maths at grade 3.	
Alternatively	Pass grade in a related Level 2 qualification and GCSE English or maths at grade 4 and GCSE English or maths at grade 3 (or equivalent).

This course will give you sound technical & aesthetic knowledge in both filmmaking and photography. The project briefs reflect the diverse roles that are available beyond the course and the project tasks allow you to grow as a person whilst learning more advanced technical skills too.

First year projects include Landscape, Portrait and Social Documentary photography and film making and culminate in a major end of year piece. In the second year you will project manage your work production, live brief scenarios are used and learners are encouraged to get work published and enter competitions. Assignments are chosen to reflect the industry and include a multi-media campaign, TV commercial, product photography, website building, social media presence and more.

The industry is vast and the job roles infinite, however the techniques and communication skills remain constant. Learners are encouraged to dig deeper into their specific area of specialism in year 2 so that they have a greater understanding of the career pathways and degree courses available.



# ELECTRICAL ENGINEERING

## Level 1 Electrical Installation One year

**Minimum Entry Requirements**  
Two GCSEs at grade 2, plus GCSE maths at grade 3.

**Alternatively** Pass grade in Aspire, our Entry Level 3 qualification (see page 67), plus GCSE maths at grade 3.

Electricians install, maintain, and repair electrical machinery, appliances and wiring and it requires several years to become a fully certified. We have been providing the pathway into this well-paid industry for years and many students who didn't meet the Level 2 entry requirements, started learning the basics at Level 1, achieved grade 4 in GCSE maths, then successfully worked their way up.

## Level 2 Electrical Installation One year

**Minimum Entry Requirements**  
Three GCSEs at grade 3, plus GCSE maths at grade 4.

**Alternatively** Pass grade in a related Level 1 qualification and GCSE maths at grade 4.

The Level 2 course provides the basic skills and experience needed to progress to an electrical career and will quickly develop your skills and competence in domestic, commercial and industrial electrical installation. You'll learn in well-equipped workshops and be taught by experienced, time-served electricians. There is practical and theory-based learning, including the principles of electrical science, installation of wiring systems and enclosures and electrical installations technology.

## T Level Electrotechnical Engineering Two years

**Minimum Entry Requirements**  
5 GCSEs at grade 4 including English, maths and science.

**Alternatively** Completion of the Level 2 qualification and grade 4 in GCSE English and maths.

This new T Level is a vital step to be an Electrician or Electrical Engineer. Industry expert tutors will teach you the practical and theory, including design, construction and testing of systems, repairing electrical faults, the science & principles and working safely. Plus our workshops are well equipped with industry standard systems and equipment.

You will have an extensive work placement with a local employer and the programme will prepare you for working in the industry or further study.

# ENGINEERING

## Level 2 Engineering One year

**Minimum Entry Requirements**  
Four GCSEs at grade 3 including English, maths and science.

**Alternatively** Pass grade in a related Level 1 course and grade 3 in GCSE English and maths.

This practical and theory-based course will give you a good understanding of general engineering principles and you will study all areas including Machining and Fabrication, with lots of hands on experience using industry standard machining, lathes, milling machines electronics and lots more. It is the first step towards an Engineering Apprenticeship or an alternative route to our T Level in Engineering.

## T Level Engineering Two years

**Minimum Entry Requirements**  
Five GCSEs at grade 4 including English, maths and science.

**Alternatively** Completion of the Level 2 qualification and grade 4 in GCSE English and maths.

T Level in design engineering offers the theoretical and vocational skills as well as the underpinning knowledge to succeed. You will also benefit from a 45 day, extended work placement in the sector. The course covers 17 core themes of engineering and prepares you for entry into many different areas at university or advanced apprenticeships which could include mechanical, electronic, automotive or aeronautical engineering.

You will study exciting projects in modules such as mechanical principles, mechatronics, engineering science, plus practical elements in our state-of-the-art workshops. In preparation for future careers, you will also study business, commercial & financial awareness and project management.

## Creating Careers in Engineering

Find out about opportunities and salaries available to you.







Level 3 Gas Installation & Maintenance	Two years
Minimum entry requirements Students must be aged 19+ and complete a satisfactory course discussion.	

For students over 19, seeking to become Gas Safe registered in a career as a Gas Engineer, you must become fully qualified to do so. This course is a specifically designed pathway, training you to become competent at installing, servicing and maintaining complex gas systems and provide you with the qualification to join the Gas Safe register and start working in the industry.

You will experience an in-depth study of gas systems, in both theory and hands-on practical lessons, including boilers, cookers and heating systems, all in our fantastic gas workshops. These are equipped with all types of appliances found in domestic and industrial systems, from basic fireplaces to complex heating systems. Alongside the course you will also gain real-world practical experience by undertaking a work placement with a Gas Safe registered company.

Having completed Plumbing courses, my next step was the Gas course. After this, I plan to become Gas Safe Registered and develop my career as a Gas Engineer.

# PLUMBING



## Creating Careers in Gas and Plumbing

Find out about opportunities and salaries available to you.



Level 1 Plumbing	One year
Minimum entry requirements Three GCSEs at grade 2.	
Alternatively	Pass grade in Aspire, our Entry Level 3 qualification (see page 67).

Students who wish to study to become a plumber or gas engineer but don't meet the Level 2 entry requirements have the opportunity to study Level 1 Plumbing. This qualification will provide them with the underpinning knowledge, skills and qualifications needed to enrol onto the intermediate Level 2 course.

Level 1 gives students a footing onto the Level 2 course, which is the pathway to either Level 3 Plumbing or Gas Installation, all necessary in the journey to becoming fully qualified in either industry.

Level 2 Plumbing & Heating	One year
Minimum entry requirements Four GCSEs at Grade 3 including English, maths & Science.	
Alternatively	Pass grade in a related Level 1 qualification and grade 3 in English & maths.

This Level 2 course is a fantastic stepping-stone to the qualifications you need. Whether you want to focus on the plumbing route, installing and repairing water piping, drainage and appliances or you want to become a Gas Engineer, working with gas-fired appliances and heating systems; this course will prepare you for study at T Level/ Level 3. The course gives students the basic skills and knowledge needed in either industry, studying units such as plumbing science, hot & cold water systems, sanitation and drainage, central heating and electrical systems.

Upon completion, students can choose to progress onto T Level Plumbing or if aged 19 or over, Level 3 Gas Installation, fully equipping them with the advanced knowledge and skills needed.

T Level Plumbing & Heating	Two years
Minimum entry requirements Five GCSEs at grade 4 including English, maths and science.	
Alternatively	Completion of the Level 2 course and grade 4 in GCSE English & maths.

This T Level course is the final step at college to become a fully qualified plumber, with all the skills and knowledge to work in the industry. There is a great mix of theory-based and practical learning in our bright, modern classrooms and class-leading workshops. Our expansive training facilities are second to none, where all aspects of plumbing can be practiced in fantastic workshops. You will learn the necessary skills to install plumbing infrastructure, equipment and appliances. Teachers take great pride in ensuring students' skills are refined to a very high standard. You will become fully trained on all the installation tools and materials needed in this highly skilled trade.

Alongside your college studies, you will also undertake an extensive work placement with a local employer, which gives invaluable insight and experience of working in the industry. This fantastic T Level course ensures students are provided with the knowledge, experience and qualification to start an exciting new career.





Centre for  
Construction

## New architectural equipment

Working with industry employers, we are always looking at what new equipment our students need to be using to be fully prepared for the construction industry.

We have recently invested £80,000 in brand new, high quality equipment and are really proud of the wide range of specialist resources you will be using throughout your studies, including:

- 5KN Tensile strength Machine
- Autodesk® AutoCAD
- Autodesk® Revit
- Leica DD120 Cable Locator
- Leica DISTO S910 Laser Distance Pro Package
- Leica iCON iCB50 Total Stations Oculus
- Quest 2 128GB All-in-One VR Headsets
- Phantom 4 Pro V2.0 Surveying Drone
- PIX4Dmapper (The leading photogrammetry software for professional drone mapping)
- Ultimaker S3 3D Printers

Our Pennington Centre for Construction has undergone a fantastic refurbishment during the summer of 2024, to give you amazing facilities and an unrivalled learning experience.



### Creating Careers in Design, Surveying and Planning

Find out about opportunities and salaries available to you.



## DESIGN, SURVEYING & PLANNING

T Level Design, Surveying & Planning for Construction		Two years
Five GCSEs at grade 4 including English, maths and science		
Alternatively	Completion of the Level 2 qualification and grade 4 in GCSE English and maths	

Completing a T Level in Construction will open many doors for you. Most students who complete the course will choose to progress to university and then into fantastic careers as Architects, Surveyors, Building Services Engineers and Civil Engineers.

You will spend 80% of time in college, learning the theory and practical skills involved in the design of structures, starting with the most basic out-buildings to huge skyscrapers and suspension bridges. You will have access to industry standard tools and equipment such as theodolites, tensile strength machines and surveying drones. You will study units including Construction Surveying/Principles/Design/Tech, Tendering & Estimating, Project Management, Building Regulations, Graphical Detailing, Hot Water Systems, Measuring Techniques Health & Safety and much more.

The other 20% of the time will be spent on an industry placement putting all this into action (minimum of 315 hours on placement).



# CONSTRUCTION MULTI-SKILLS

Bricklayer  
Carpenter  
Painter  
Plasterer

We also offer  
Level 1  
Multi Skills  
See our Ambition  
programme on  
page 68

## Creating Careers in Construction

Find out about  
opportunities and  
salaries available to you.



### Level 2 Construction Multi Skills One Year

Minimum entry requirements  
Four GCSEs at grade 3 including English or maths

Alternatively Pass grade in a related Level 1 qualification and  
satisfactory College assessment in English and  
maths

This is an excellent route into the many construction industries, giving you a focused taste of four of the main trade occupations. Throughout this practical, hands-on course, you will study Bricklaying, Carpentry & Joinery, Painting & Decorating and Plastering including the underpinning theory behind the materials, techniques and processes involved. Students will be taught to hone their skills by expert teachers, in our fantastically well-equipped workshops, fitted with the latest tools, machinery and materials, as used in industry.

Upon completion you will then be able to choose one of the specific trade pathways to focus on and move onto a Level 2 course in one of these fields. You will then study that trade in-depth and become equipped with the essential knowledge and skills to become ready for employment in industry.

# BRICKLAYING

### Level 1 Bricklaying One year

Minimum entry requirements  
Three GCSEs at grade 2

Alternatively Pass grade in Aspire, our Entry Level 3  
qualification (see page 67)

Careers in construction require excellent technical skills which are built from the ground up. Level 1 Bricklaying forms the foundations, establishing your skills and knowledge of brickwork to an introductory level. You will start to develop and understand the basic techniques required to work in the industry and successful completion forms the entry requirements for Level 2 where you will develop more advanced skills.

This is a great introductory course for hands-on learners, with a heavy focus on practical learning. You will practice a range of different bricklaying techniques including building solid walling, isolated and attached piers, cavity walling and forming masonry structures. This is underpinned with the theory, where you will study building methods, construction technology and interpreting working drawings.

### Level 2 Bricklaying One year

Minimum entry requirements  
Four GCSEs at grade 3 including GCSE English and maths

Alternatively Pass grade in a related Level 1 qualification

For those serious about a career in bricklaying, advancing to Level 2 will develop your skills and knowledge in brickwork to an intermediate level, making you ready for employment. Taking the techniques and skills gained at Level 1, you will study at a greater depth and with a balanced mixture of both practical and theory-based learning. In bright, modern classrooms you will be inspired and supported by highly experienced lecturers and in our huge, indoor bricklaying workshop, you'll be able to refine your bricklaying skills in a dry and controlled environment.



# CARPENTRY & JOINERY



Level 1 Carpentry & Joinery	One year
Minimum entry requirements: Three GCSEs at grade 2.	
Alternatively	Pass grade in Aspire, our Entry Level 3 qualification (see page 67).

For people who are creative and find the best way to learn is through practical tasks, studying Carpentry and Joinery is an excellent route into a life-long career. Level 1 is an excellent introduction to woodworking skills, starting with the basic crafting techniques when working with solid hardwoods, softwoods, and board materials. As well as the practical skills, you will study the maths, terminology and theory needed for using specialist tools used in measuring, cutting and jointing timber to size.

Level 2 Carpentry & Joinery	One year
Minimum entry requirements Four GCSEs at grade 3 including English and maths.	
Alternatively	Pass grade in a related Level 1 qualification.

Advancing to Level 2 you will be studying in our brand-new Carpentry and Joinery workshops equipped with everything from the latest machinery and tools to the most basic measuring devices used in leading professional workshops and building sites. This ensures you are prepared for employment in woodworking industries from property construction to product manufacturing.

T Level Carpentry & Joinery	Two years
Minimum entry requirements Three GCSEs at grade 4 including English and maths.	
Alternatively	Completion of the Level 2 qualification and grade 4 in GCSE English and maths.

The T Level qualification provides the highest qualification in Carpentry & Joinery available at Southport College. Over the duration of this fantastic two-year programme you'll gain, practice and refine technical woodworking skills to a highly professional standard.

Alongside studying in our amazing workshops, you will also undertake an extensive work placement with a local employer, giving you invaluable insight and experience into the real-world of working in the industry. This fantastic T Level course ensures students are provided with the knowledge, experience and qualification to progress into an exciting new career or further in-depth study and work experience by undertaking an Apprenticeship.

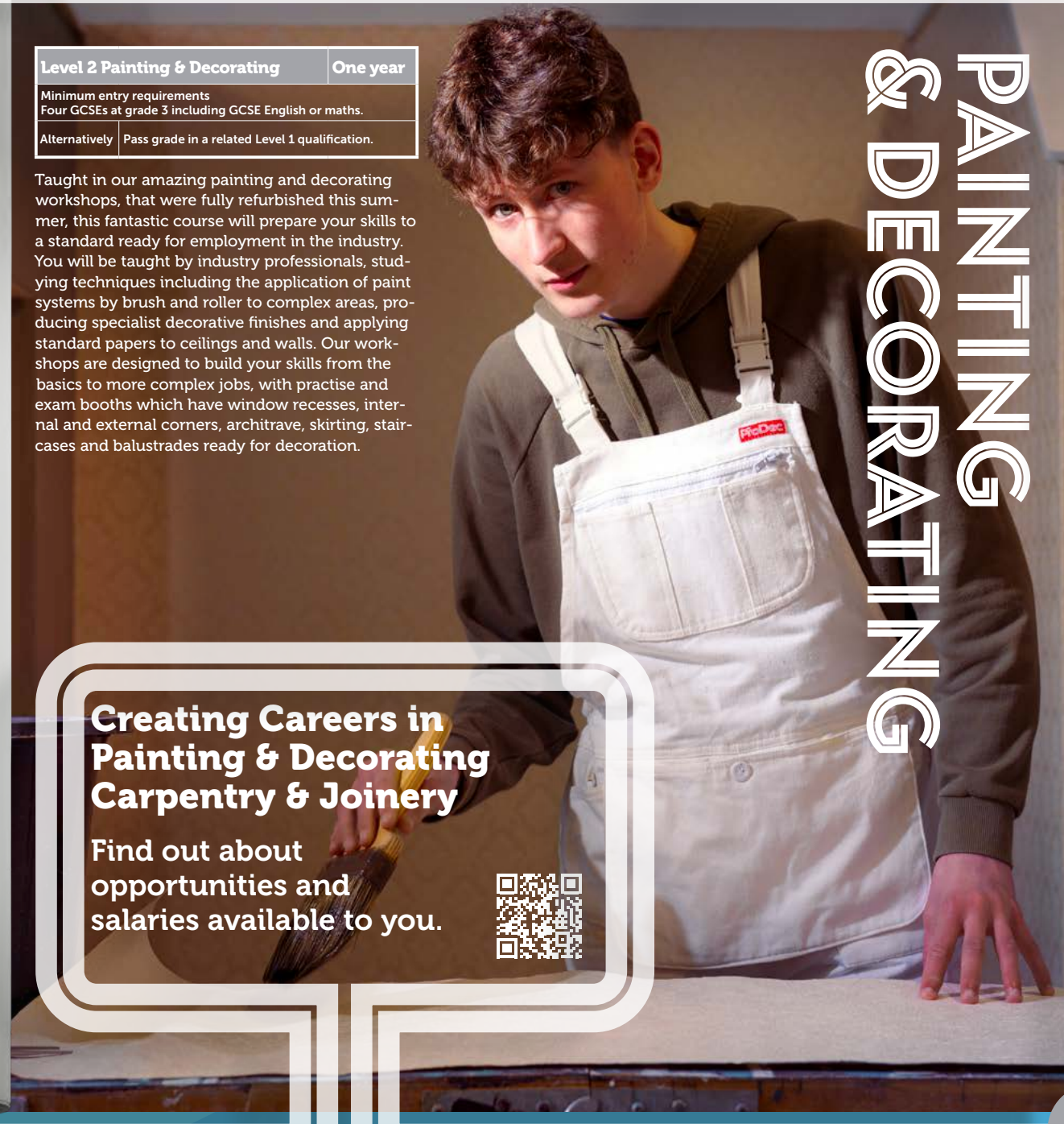
Level 2 Painting & Decorating	One year
Minimum entry requirements Four GCSEs at grade 3 including GCSE English or maths.	
Alternatively	Pass grade in a related Level 1 qualification.

Taught in our amazing painting and decorating workshops, that were fully refurbished this summer, this fantastic course will prepare your skills to a standard ready for employment in the industry. You will be taught by industry professionals, studying techniques including the application of paint systems by brush and roller to complex areas, producing specialist decorative finishes and applying standard papers to ceilings and walls. Our workshops are designed to build your skills from the basics to more complex jobs, with practise and exam booths which have window recesses, internal and external corners, architrave, skirting, staircases and balustrades ready for decoration.

# PAINTING & DECORATING

## Creating Careers in Painting & Decorating Carpentry & Joinery

Find out about opportunities and salaries available to you.







Centre for  
Construction

# MOTOR VEHICLE ENGINEERING

## Creating Careers in Motor Vehicle Engineering

Find out about  
opportunities and  
salaries available  
to you.



Studying Motor Vehicle Engineering at Southport College means you will learn in fantastic automotive workshops that are just like the real thing. They are fitted out with the latest industry equipment, including ramps, wheel balancers, pneumatic tools and high-tech diagnostic kits.

The courses are a blend of theory and practical sessions, which gives learners underpinning knowledge and technical skills. Practical sessions are overseen by our industry expert teachers, and the theory is taught in a classroom with a glass partition to the workshops. This means that whatever session you are doing, you are always fully immersed in the industry environment.

There is a diverse fleet of real cars for students to work on. This means that you are familiar with using industry standard equipment and prepared for the workplace with the skills and hands-on experience professional garages need their motor vehicle engineers to have.

Level 1 Light Vehicle Maintenance	One year
Minimum entry requirements Three GCSEs at grade 2 including English and maths.	
Alternatively	Pass grade in Aspire, our Entry Level 3 qualification (see page 67) and GCSE English and maths at grade 2 (or equivalent).

Quality training and experience is important for anyone wanting to work in the motor industry. Our Level 1 course introduces students to the basics of vehicle maintenance and repair work, through a varied programme of both practical workshop sessions and theory-based sessions. It allows students to gain the entry requirements for the Level 2 programme, whilst working towards achieving any GCSE English and/or maths qualifications required.

Students build vocational skills over the course of the year, increasing their knowledge in vital areas and components. You'll study the theory and practical aspects of lubrication systems, cooling systems, fuel & air systems, electrical systems, transmission systems, spark ignition systems, steering & suspension systems, wheels & tyres and brake systems.

The teachers are  
great and the  
workshops have all  
the equipment you'll  
ever need.

Level 2 Vehicle Maintenance & Repair	One year
Minimum entry requirements Four GCSEs at grade 3 including GCSE English and maths.	
Alternatively	Pass grade in a related Level 1 qualification and GCSE English and maths at grade 3 (or equivalent).

Our Level 2 course will train you to the standards required by employers in the vehicle maintenance and repair industry. Covering a diverse range of essential industry techniques, students will study units including brakes and tyres, removing and replacing chassis units and components. You'll also study ancillary topics such as pre and post vehicle inspections, good workplace housekeeping, maintaining positive relationships and health and safety.

There is lots of practical work, alongside learning the theory. So you'll not only learn how to do something but you'll understand and be able to explain the "why" behind it too!

Level 3 Vehicle Maintenance & Repair	One year
Minimum entry requirements Pass grade in Level 2 Vehicle Maintenance & Repair and GCSE English or maths at grade 4 and GCSE English or maths at grade 3.	

This advanced qualification is designed to meet the skill needs of motor vehicle technicians in the automotive vehicle maintenance and repair sector to a higher level.

Building on the knowledge and skills gained at Level 2, students move onto higher levels of technical knowledge and ability by studying units including the diagnosis and rectification of: light vehicle chassis system faults, auxiliary electrical components, engine and component faults and light vehicle transmission and driveline faults.

Upon completion, you will be able to competently inspect light vehicles, diagnose and rectify issues. You will be able to confidently explain your diagnosis of issues and the remedial actions required, with the thorough understanding of the underpinning theory you gain.





Enterprise  
& Early Years

### T Level Digital Production, Coding & Web Development

Two years

Minimum entry requirements  
Five GCSEs at grade 4 including English and maths.

Alternatively Merit grade in a related Level 2 qualification  
and GCSE English and maths at grade 4  
(or equivalent).

Our T Level in Digital Production, Coding & Web Development is the perfect starting point for your digital career! Created in collaboration with leading digital producers, designers, and developers, you'll learn from the best and become equipped with robust transferable digital skills that will help you succeed in the digital world.

You will spend 80% of your T Level learning in a blended-learning classroom environment where you'll build a comprehensive toolkit of skills, knowledge, and experience that is highly valued by digital employers, leading to exciting job opportunities and university prospects.

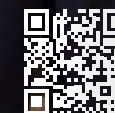
For the remaining 20% of your programme, you'll get hands-on experience in a real-world setting through a 45-day industry placement, where you'll work on digital projects with a local employer. Together, we'll find the perfect placement that aligns with your interests and strengths in digital production, coding and web development.

# DIGITAL PRODUCTION, CODING AND WEB DEVELOPMENT



## Creating Careers in Travel and Tourism

Find out about  
opportunities and  
salaries available  
to you.



# TRAVEL & TOURISM



I enjoyed the  
Airline unit so  
much, I have  
been inspired to  
become Cabin  
Crew and fly  
with Emirates.

### Level 3 Tourism Management & The Visitor Economy

Two years

Minimum entry requirements  
Five GCSEs at grade 4 including English or maths and GCSE  
English or maths at grade 3.

Alternatively Pass grade in a related Level 2 qualification and  
GCSE English or maths at grade 4 and GCSE  
English or maths at grade 3.

For students wanting to learn about one of the UK's most dynamic industries, this is the course for you! You will gain knowledge, experience and skills directly applicable to a future career in Travel and Tourism. Exploring all sectors of the industry, you will be well prepared for working in a wide range of jobs and environments such as airlines and airports, travel agencies, conference and event centres, cruise ships, theme parks, tourist destinations and resorts, hotels and restaurants.

The course is a fantastic blend of theory and practical learning. Our classroom includes a mock fuselage with real airline seats and equipment. You will investigate the industry in depth, studying topics including the UK as a destination and its attractions as well as sustainable tourism. Students learn all about tour operations, resort reps, European and long-haul travel, event hospitality, conferences and exhibitions. There's also lots of trips and visits to enrich everything you learn with real experiences.

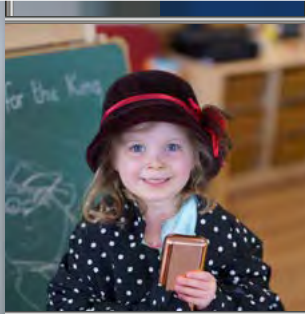




Enterprise  
& Early Years



Lessons are practical, with actual children in a real nursery! Hands-on experience is the best; you can't learn all about children just from a Powerpoint!



Level 2 Early Years	One year
Minimum entry requirements Grade 4 in GCSE English or maths and three GCSEs at grade 3 including English or maths. Plus a satisfactory DBS.	
Alternatively	Pass grade in Ambition Caring Professions (see page 68) or a related Level 1 qualification and GCSE English or maths at grade 3.

Become equipped with the knowledge, skills and competencies to work with children and young people within the age range of 0 to 11 years. This course is the perfect stepping-stone to Level 3 Childcare or T Level, if you need to achieve grade 4 in your GCSE English and/or maths.

Our fantastic in-house nursery setting and classrooms emulate the real early years workplaces you are training to work in. You will learn all about a range of subject areas covering all aspects of childcare, health and education. Key topics include communication, supporting positive behaviour, equality of opportunity and partnership working.

You will also undertake practical placements, specialising in children aged under seven, with children regularly visiting from local childcare providers for you to complete planned activities with.

There are also lots of trips and visits to enrich everything you learn with real experiences.

## Creating Careers in Early Years Education

Find out about opportunities and salaries available to you.



# EARLY YEARS EDUCATION & CHILDCARE

T Level Early Years Education & Childcare	Two years
Minimum entry requirements Five GCSEs at grade 4 including English and maths. Plus a satisfactory DBS	
Alternatively	Pass grade in a related Level 2 qualification and GCSE English and maths at grade 4 (or equivalent) and a satisfactory DBS

Our exciting T Level programme prepares you for a career as an Early Years Educator and gives you enough UCAS points for university applications. If you're looking for experience in schools, nurseries, pre-schools, crèches and children's centres with the qualifications to back it up, this is ideal.

You will be learning in our fantastic fully equipped onsite nursery and early years classroom, where local pre school children are regular invited to come and join us. Not only does this give you regular opportunities to put your theory into practice with hands on experience with a wide variety of children, but it also allows you to learn about creating vibrant wall displays, planning engaging sessions and setting up stimulating activities.

Integral to the T Level is a valuable work placement. You will complete a 750 hours of placement in a setting related to your early years career ambitions which forms part of your qualification, giving you a wealth of valuable experience. As well as the knowledge and skills you will need to work with children, this qualification gives you a full licence to practice, enabling you to be included in staff to child ratios.

We also offer  
Level 1 Caring  
Professions  
See our Ambition  
programme on  
page 68



## Helping you to progress

We proudly provide an amazing range of courses for everyone.

For pupils who don't meet the entry requirements for Level 2 courses and may need a little extra support in their transition from school to college, we have a fantastic selection of courses, designed with their specific needs in mind.

Our friendly team of teachers are specialists in foundation learning and provide outstanding support to their students.

# FOUNDATION LEARNING

## CONNECT

A one-year programme to prepare learners for study at Entry Level 3.

Upon completion, students will achieve an Entry Level 2 Qualification.

## ASPIRE

A one-year programme to prepare learners for study at Level 1.

Upon completion, students will achieve an Entry Level 3 qualification.

## AMBITION

A one-year programme to prepare learners for study at Level 2.

Upon completion, students will achieve a Level 1 qualification.

Our students learn in modern classrooms and workshops, gaining skills and confidence which fully prepares them for their next level of study.



Our one year Connect Course is for learners who are working towards Entry Level 2.

It is tailored to a student's individual needs and focuses on the transition to College from school as well as preparation for their next step.

### What you will study

The early part of the course focuses on developing life skills such as managing money, living healthily and managing relationships. Students will develop their independent travel skills, learn basic cookery, take part in confidence building activities and will also get involved in enterprise schemes, which are excellent for gaining basic retail and customer service skills, as well as team working and idea generation.

Students also continue to develop their English and maths and have a dedicated Progress Tutor.

As the students progress, they can study for a qualification to prepare them for supported living or the work place or they can continue with the next level of study.

### What you can achieve

When they are ready, students can progress on to our Aspire Course and gain a qualification in Further Learning or employment.

## Confidence and skills for you

Our Connect courses are designed to give students the confidence and skills to progress on to the Entry Level 3 Aspire Course. The course also develops the students' ability to move towards independent living or the possibility of work experience through a supported internship.

Starting college can be a very daunting experience for many students on our Connect courses, so we take great care in ensuring that the transition from school to college goes as smoothly as possible. We offer group and individual orientation visits and taster days that take place before students come to College in September. These visits help to introduce students to the College at their own pace and are tailor-made to suit them.

By offering the necessary support and guidance needed to help them to succeed, we ensure many of our students who start on our Connect courses progress through College to higher level courses and on to employment.

### Why you should choose Southport College

There is dedicated classroom space for the Connect courses, with specialist resources and equipment.

We have invested in a brand new facility, kitted out with all the technology and utilities in a modern home. This is the perfect environment to gain independent living skills.

We offer extensive support in the form of group and 1:1 support as well as lunchtime and break supervision.

We have a Learning Support Hub in College for students to enjoy some quiet time during break and lunch times.

The College has been delivering courses for young people with Learning Difficulties or Disabilities (LDD) for many years.

As a College we are redeveloping our courses in line with the Government's latest curriculum initiatives.

## ASPIRE

The Aspire Course is for learners who are working towards Entry Level 3 and forms part of the Extended Certificate in Further Learning and Employment.

It has been designed to help you progress towards the world of work, whilst at the same time helping you become a more independent mature young adult both in learning and life.

### The course has three key elements:

#### Preparing for adulthood

This includes independent living; health and fitness; budgeting and communication skills.

#### English and maths

Classes to help you achieve these important qualifications.

#### Future Skills

Preparing you for your future employability and digital skills, as well as personal development.

Giving you a flavour of a wide range of courses. This will help you build your skills and decide what you might like to study in more detail the following year.

### Helping you to progress

The Aspire course is designed to help students progress towards the world of work and/or Level 1 vocational courses at the College. Aspire is a fantastic option for Entry Level learners. It allows you to try a range of different subjects before focusing on and progressing in one vocational area.

You will also be working towards gaining English or maths qualifications.

### Why you should choose Southport College

We have fantastic facilities for all our college students and our Aspire facilities are second to none! There is dedicated classroom space and specialist resources and equipment; as well as realistic working environments and a large well equipped sports hall and gym. What's more, we have a new life skills area, complete with all the facilities and utilities in a modern home, which is brilliant for improving your cooking and independent living skills.

All our teachers are friendly, supportive and very welcoming. They are all experienced and want you to achieve your very best. They are here to help you every step of the way.

### What you will study

These range from year to year depending on the interests of the students but may include:

- **Life skills**  
Independent living; health and fitness; budgeting and communication skills.
- **Skills for further learning and employment**
- **Enterprise**
- **Independence Skills**
- **Budgeting and Money Management**
- **Health & Wellbeing**
- **Digital Skills**

Successful students may be able to progress to a Level 1 course in their chosen vocational area or a supported internship.





## What you will study

As well as your main subject, you will also study:

- Maths & English
- Developing interpersonal skills
- Healthy living
- Preparation for work
- Respecting equality and diversity in the workplace
- Safeguarding online and in daily life
- Teamwork skills

There may also be a work placement related to your subject.

## What you can achieve

Successful students may be able to progress to a Level 2, course Apprenticeship, or a supported internship.

## A course for you

**Ambition Level 1**  
**One year**

**Entry requirements:** Minimum 2 GCSEs at grade 2 and English and maths at grade 1, or completion of our Aspire course and English and maths GCSE at grade 1 (or equivalent).

### Progression

Level 2 course, employment or Apprenticeship.

## Ambition Level 1 Pathways

### Ambition Caring Professions

Learn in our amazing Clinical Skills Hub, early years nursery and classroom, preparing you for Health and Social Care or Child-care courses.

### Ambition Construction Multi Skills

Prepare for your trade of choice, learning lots of skills in our wonderful Bricklaying, Painting & Decorating and Plastering workshops.

### Ambition Hair & Beauty

Get yourself ready for a career in hair and beauty, learning the latest tools and techniques used by stylists and beauty therapists, in our fabulous Concept Salons.

### Ambition Creative Industries

Carve a future in the world of art, creative media and photography, in our stunning studios, with traditional and state-of-the-art tools.

# A career for you

Our Level 1 pathways allow you to explore and gain skills in four exciting vocational areas whilst at the same time developing your maths, English and employability skills.

The course takes a year to complete and there are four pathways to choose from. They are a great introduction to the subject and are designed to give you the skills needed to progress to Level 2.

## Why you should choose Southport College

We have realistic working environments for you to learn in, fantastic English and maths support and really friendly encouraging industry experienced teachers.

You will also have lots of opportunities to gain employability skills and really grow your confidence.



Southport College has great studios and classes. There are lots of nice people here too. I've learned skills for life, alongside my maths and English, all helping me towards my career goal.



# HOW DO I APPLY?

Our open events are the ideal opportunity to view our fantastic facilities, meet our friendly, industry-experienced teachers, get a real feel for life at Southport College and to prepare for joining us in September. Families are welcome too and it's the perfect time to find about out our unrivalled student support, travel passes and lots of other important College information.

## STEP 1 Attend an Open Event

### Autumn Term

Monday  
7 October 2024  
4.30 - 7.00pm

Thursday  
21 November 2024  
4.30 - 7.00pm

### Spring Term

Monday  
24 March 2025  
4.30 - 7.00pm

## STEP 2 Apply online

[southport.ac.uk](https://southport.ac.uk).

We advise our students to do this as early as possible as our most popular courses do fill up fast!

## STEP 3 Your application

After we receive your application, you will need to book a course discussion to check if the course is right for you. It's also your chance to ask about things such as travel passes or learning support.

There are lots of dates to choose from and parents or guardians are welcome too.

## STEP 4 Formal offer

Following a positive course discussion you will be offered a place to become a Southport College student.

Once you have finished your GCSE exams, you are invited to #welcomefest, our VIP event exclusively for students who will be joining us in September.

## STEP 5 Enrolment

During the summer break all applicants will be sent a link to our application portal. This enables you to check all your details are correct and you've given us all the information we need.

You will then be sent your individual enrolment date and time. This will usually be for either the day of or the day following GCSE results and takes place on campus.

You will need to bring proof of your results, complete your enrolment and collect your college ID badge, all ready for term to start.

It's very straightforward and parents or guardians are welcome too.

## STEP 6 Joining us as a student

Your course will begin at the start of September 2025.

You will receive information about your start date and timetable towards the end of August.

If you have any questions during any of these stages then please get in touch.

Once you've decided on the right course for you, the quickest and easiest way to apply to Southport College is online at [southport.ac.uk](https://southport.ac.uk).





We are proud to have a positive, high expectation environment that allows our students to excel in their future careers, education and life.

**Southport College**  
**Mornington Road,**  
**Southport**  
**PR9 0TT**  
**01704 392704**  
**[www.southport.ac.uk](http://www.southport.ac.uk)**



Southport College is committed to equality and diversity.  
The College is dedicated to the active pursuit of an equal opportunities policy which addresses the need and right of everyone in the College to be treated with respect and dignity, in an environment in which a diversity of backgrounds and experiences is valued.

If this publication is required in an alternative format or language, or you wish to discuss any other specific requirements or adjustments for joining one of our courses, please contact our Student Information Centre on 01704 392704.

Information is correct at the time of going to press. Every effort is made to ensure accuracy.

The College reserves the right to withdraw or amend courses, entry requirements, fees and details included in this publication, or any other supporting publications or advertisements.

Courses are offered subject to viability of group size, minimum and maximum numbers, as defined by the College. Acceptance on to a course is at the discretion of Southport College.

All Southport College students are subject to the College's policies and procedures. Other terms and conditions may apply. This publication, produced in September 2024, supersedes any other publication or advertisement promoting these courses.

© Southport College 2024.



**Creating  
Careers**

Southport College  
Mornington Road, Southport  
PR9 0TT  
01704 392704  
[www.southport.ac.uk](http://www.southport.ac.uk)

